



OSGi Alliance Community Event

Sprint Titan Platform

Brandon C. Annan, Chief Java Architect, Sprint

presented by

Joachim Ritter, Consultant, ProSyst Software



Introduction



- **Who is Sprint Nextel?**

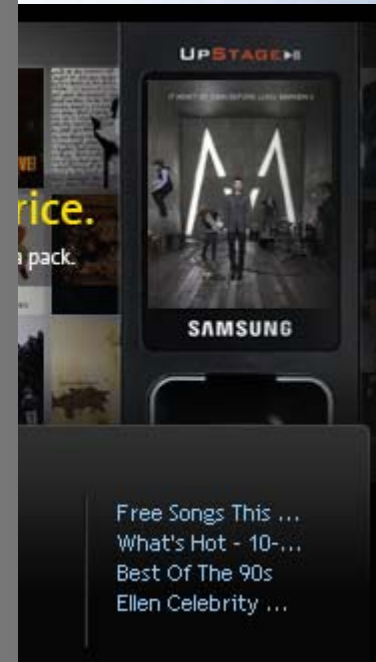
- North American telecommunication carrier offering wireless and wireline communication and broadband services.
- Operates largest and fastest national wireless network (CDMA & iDEN) in the US.
- Value adding services: Walkie Talkie, Music, TV, Ringers, Screensavers. Data Service revenue up 44% to \$1.2b.
- Sprint Nextel about itself:

*Sprint Nextel offers a comprehensive range of wireless and wireline communications services bringing the **freedom of mobility to consumers, businesses and government users**. Sprint Nextel is widely recognized for developing, engineering and **deploying innovative technologies**, including two robust wireless networks serving 53.6 million customers at the end of the first quarter 2007. [www.sprint.com, June 2007]*



Sprint Java ME Eco-System, Today

- **Sprint Nextel devices with Java Support**
 - Since launching in 2002, well over 100 million Java devices with 9 different OEMs
- **Sprint Vending Machine: Digital Launch**
 - Thousands of Java applications for download
 - Significant source of revenues
- **Sprint Music Store**
 - MIDP based mobile front-end
- **Developer Community**
 - Application Developer Program (ADP)
 - >130.000 registered developers
 - Hundreds development shops





Next Step: Sprint Titan Platform

- **Motivation**

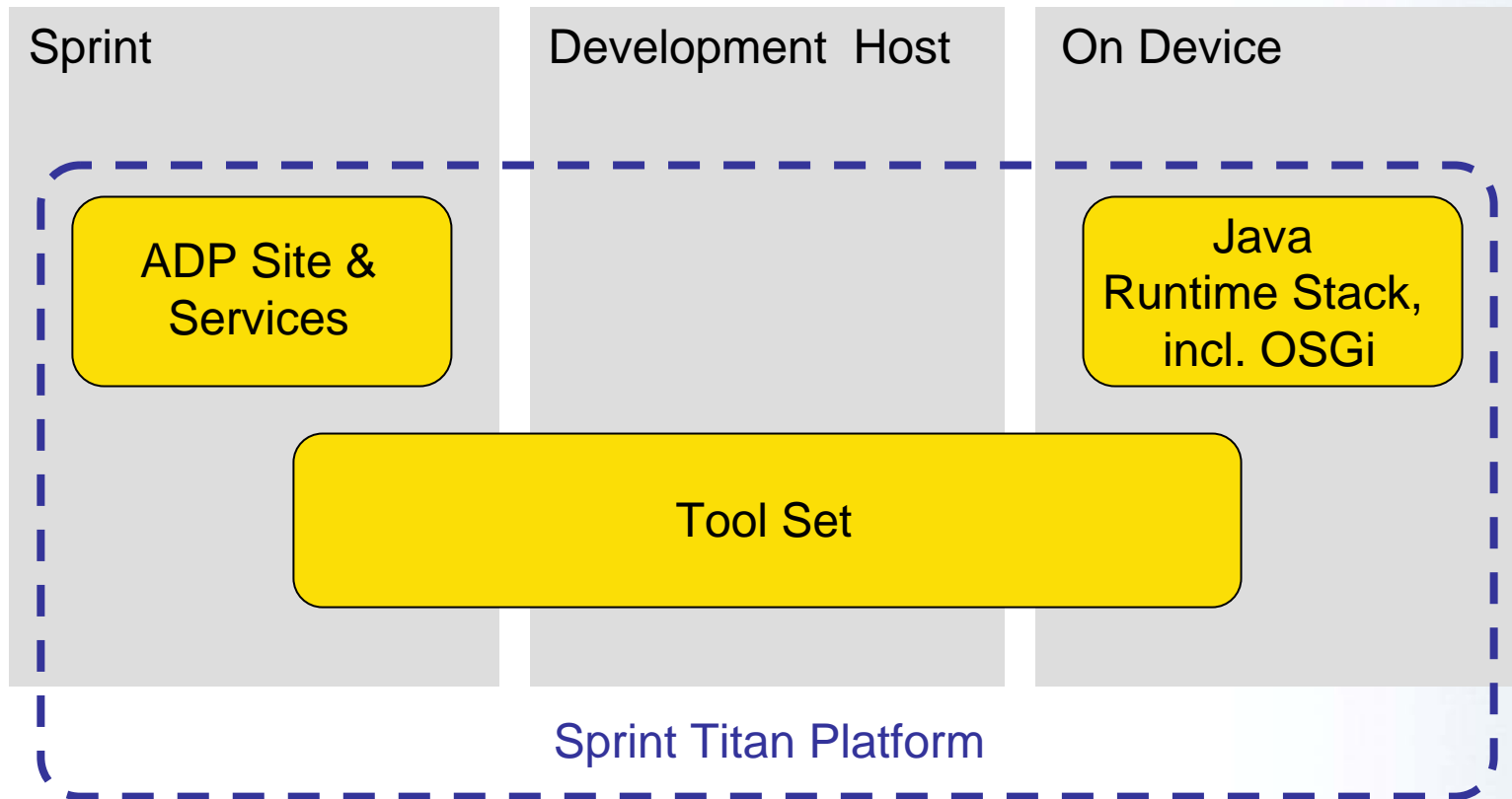
- Growth of mobile Java games market leveling out.
- Get ready for the next wave of mobile applications & services, e.g. location based services, instant messaging, NFC, etc.
- Leverage creativity of the 5+ million Java developer community.

- **Concept**

- Introduce a new tool for mobility: OSGi!
- Maintain backward compatibility to MIDP 2.0.
- Provide known environments to ALL Java developers.
- Leverage existing developer communities.



Sprint Titan Platform - Overview





Sprint Titan Platform

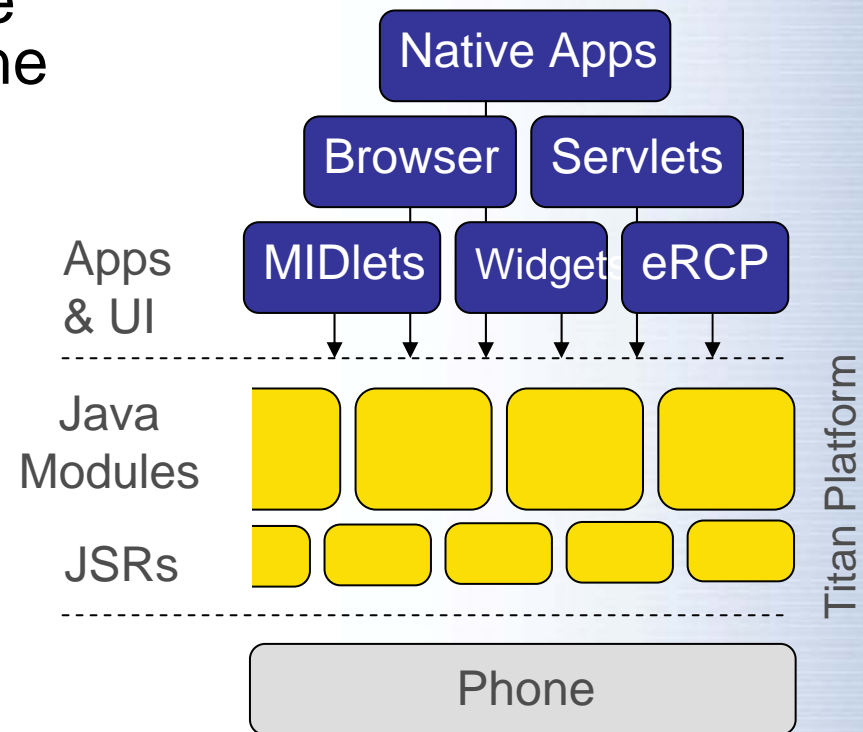
- **Technical Concept**

- Connected Device Configuration (CDC) utilizing JSR 232 Open Services Gateway Initiative (OSGi) Framework Core and Mobile Specifications.
- MIDP Container provides full backward compatibility with our current J2ME Applications.
- Supports new mobile application models and features familiar to the larger Java developer community outside Java ME including Widgets & Servlet & JSP, eRCP/eSWT, Full JVM + JPDA Debugging.
- Access to the most popular development tools.
- OMA-DM Remote Management and Content Delivery.



Sprint Titan: A Mobile Service Platform

- Java features & APIs can be deployed at any time!
- Java platform acts as service platform for many other phone apps (“shared services”)
- Clear separation of UI and business logic
- Full remote management support via OMA-DM/DL
- Advanced security model
- Powerful, managed platform for carriers and enterprises





Who benefits from Titan?

- Complex mobile apps
- Remote management
- Personalization
- Homogene app environment

Enterprises

Development
Community

Titan/
OSGi

- J2ME, J2SE, J2EE
- New marketplace for mobile middleware & applications
- Enables innovation

- Richer mobile apps
- Remote assistance
- Personalization

End User

Sprint

Together with NEXTEL

- Platform for Sprint services & pre-installed applications
- Remote Management



Industry Best Enterprise Presence

- **Go Mobile!** Combines feature rich devices with high speed networking and enterprise IT familiar application platform
 - Middleware is now mobile - a new market place
 - Faster time to market with middleware software and widgets
 - Engineering expenses dramatically drop to develop for mobile
 - Expands corporate enterprise applications to include device features such as GPS and the browser
 - Manage your mobile fleet like you manage your internal systems
 - OSGi Alliance Enterprise Group



Why OSGi?

- Approved Java standard: JSR 232
- Only cross-platform runtime framework suitable for use in mobile handsets
- Complementary nature to other technologies
- Lightweight footprint
- Modularity
- Mobile specific out-of-box features (e.g. DMT, multi app model support, deployment admin, etc.)
- Market acceptance & momentum



World Class Developer Program

• Practice what we preach.....

The new Sprint Application Developers Program will incorporate OSGi and OMA-DM technology

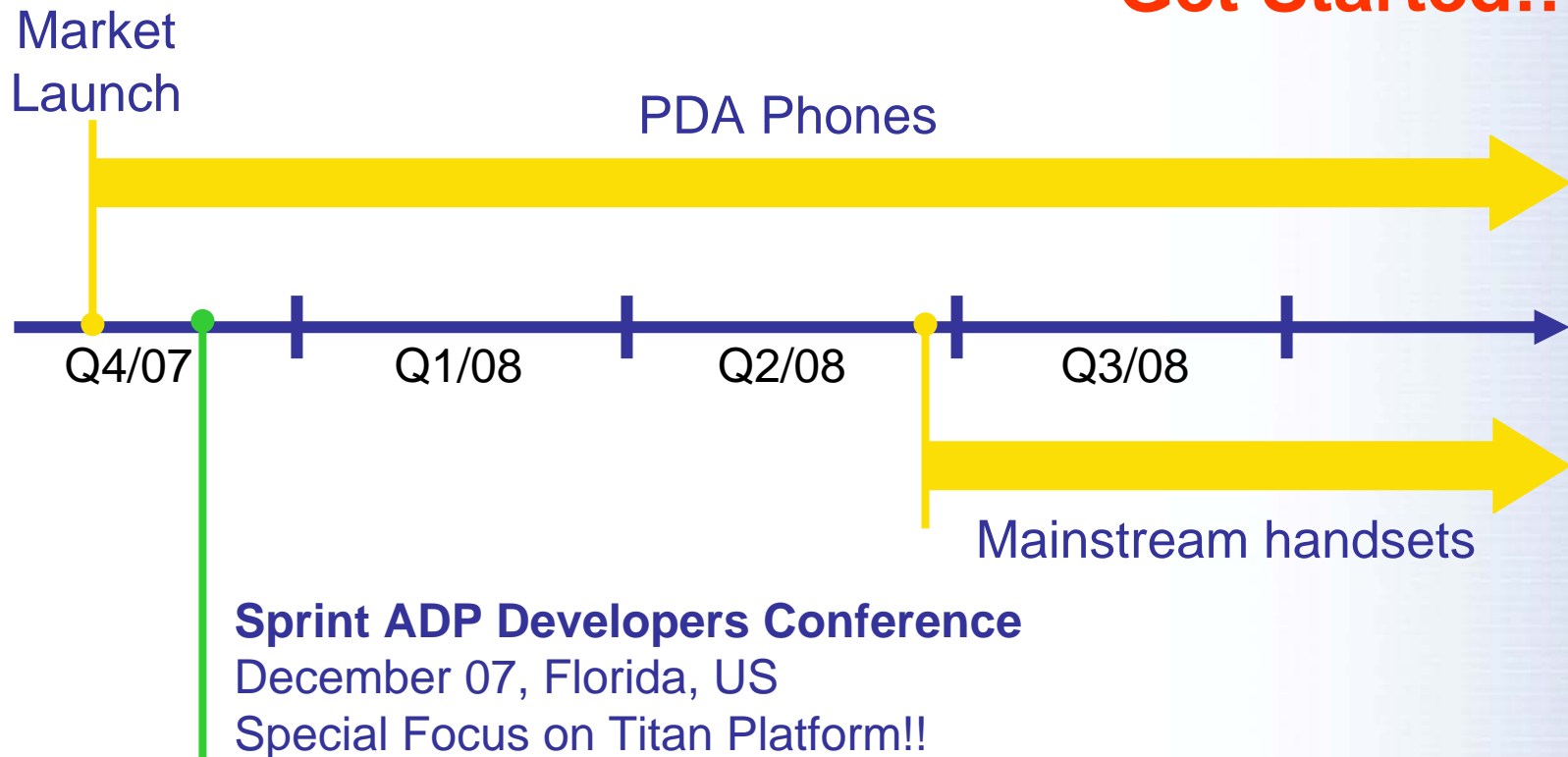
- Connects the developer platforms to a new marketplace of tools, services, and widgets.
- IDE agnostic. Plugin concept.
- On device trouble-shooting.
- Virtual Device Lab with Mobile Complete, get early access to devices without purchasing them.
- <http://developer.sprint.com>





Titan Platform Timeline

Get Started!!





OSGi Alliance Community Event

June 26th - 27th, 2007

Siemens AG Campus - Munich, Germany



Thank you!

